



RECYCLING DROP-OFF

OPEN 7 DAYS A WEEK • 24 HOURS A DAY • A FREE SERVICE FOR THE GREATER LANSING COMMUNITY



NEWSPAPER (including inserts)

e.g., LSJ, Community Newspapers, etc.

Remove from plastic or paper bags. Remove all string or twine. Inserts are acceptable (Sunday coupons etc.). **NO:** Magazines, phone books or junk mail

GLOSSY MAGAZINES & CATALOGS

e.g., Time, People, JCPenney, Lands End

Must be glossy on all pages. May be staple or glue bound. Remove from plastic or paper bags. Remove all string or twine. **NO:** Junk mail, phone books, TV Guide or books

CORRUGATED CARDBOARD & BROWN BAGS

e.g., packing boxes; brown paper grocery bags

Break down and remove any materials/contaminants (Styrofoam, wood, food). **NO:** cereal boxes, shoe boxes or other boxboard, glossy or shiny cardboard, wax-coated cardboard, 6/12/24 pack beverage cases

BOXBOARD

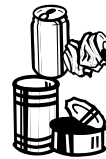
e.g., cereal and cracker boxes; tissue and towel rolls

Break down and remove any materials/contaminants (Styrofoam, plastic, food). **NO:** wax-coated, foil-coated, or refrigerated or freezer boxes (which have moisture coating), 6/12/24 pack beverage cases



FOOD & BEVERAGE GLASS (brown and clear)

Rinse clean and remove lids and metal rings. Place metal lids with tin cans. Labels may be left on. Separate by color. **NO:** Green glass, window panes, light bulbs, Pyrex, plate glass, automobile glass



TIN CANS & ALUMINUM

e.g., soup cans, aluminum foil & trays

Rinse clean and flatten. **NO:** paint cans, appliances, hangers, fencing, scrap metal or aerosol cans, containers with food residue

MIXED PLASTIC

e.g., water bottles, laundry detergent bottles, margarine tubs

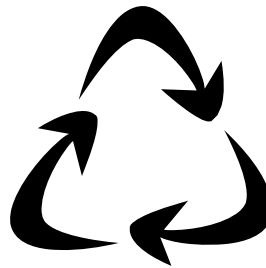


Remove and discard lids, rinse clean and flatten. Items with #1 – #7 symbol on bottom accepted, including bottles and jugs with narrow, threaded neck; plastic tubs (margarine, sour cream, cottage cheese, etc.); microwave trays; and yogurt containers. **NO:** Plastic bags; paper wax-coated milk or juice cartons; Styrofoam containers/packaging; syringes; garden hose/rubber; furniture; pools; toys; free flowing liquids



#2 HDPE MILK JUGS

Remove and discard lids, rinse clean and flatten. Containers must have a seam and the #2 HDPE symbol on bottom. **NO:** motor oil bottles; Styrofoam; clear #1, #3, or #6 plastic; HDPE #2 colored plastic jugs or tubs (cottage cheese, sour cream, margarine)



OFFICE PAPER COLLECTED
AT THE RECYCLING CENTER BUILDING
MONDAY THROUGH FRIDAY
FROM 7 AM TO 4 PM

16936 WOOD ROAD • LANSING • 517-372-2800 • 1-888-9GRANGER • WWW.GRANGERNET.COM